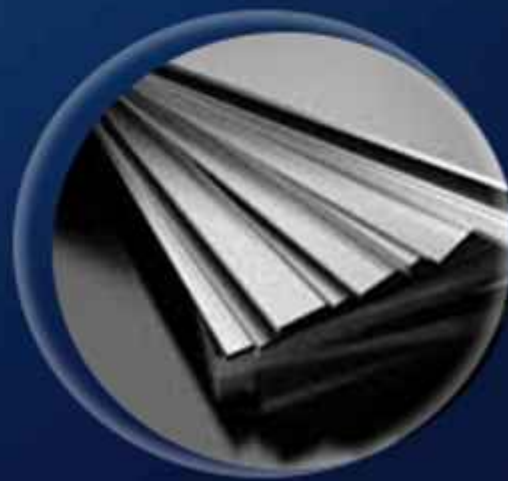
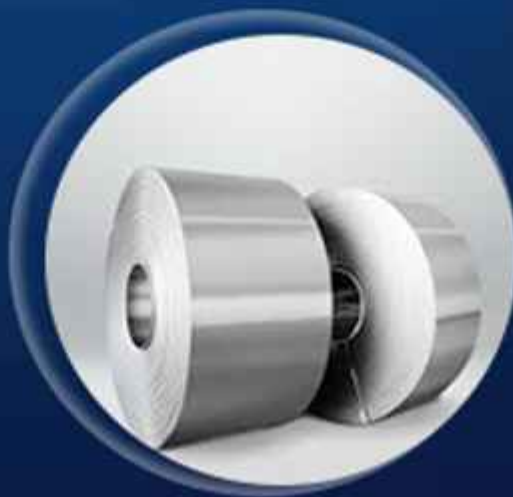




Toos Arg Yekta

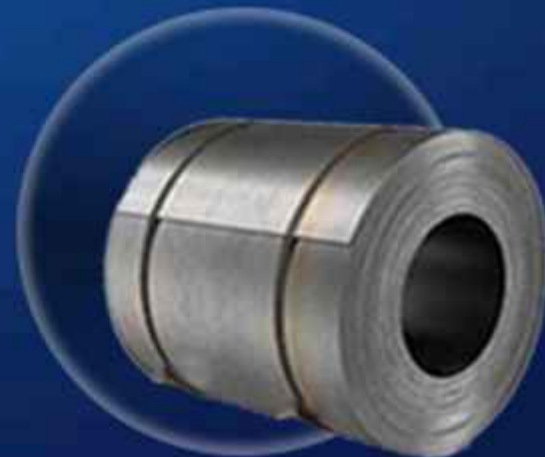
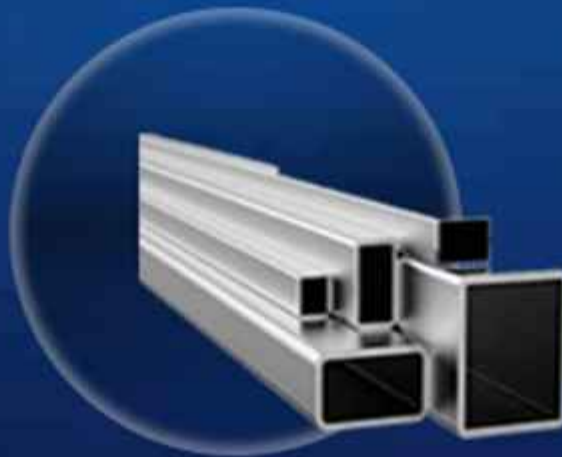
[WWW.Toosarg.ir](http://WWW.Toosarg.ir)

[WWW.Toosarg.com](http://WWW.Toosarg.com)



This company has nearly half a century of experience in supplying steel to producers and consumers in Iran, as well as exporting to neighboring countries. It was established in 1978 as part of the Ghods Industrial Group and has continued its operations since 2011 under the name of Toos Argh Yekta to expand its activities and provide better services. The main activities of the company include offering all types of steel sheet sections, including Hot Rolled Coil, Cold Rolled Coil, galvanized Roll, colored Coil, Hot Rolled Pickled, and stainless steel from various imported and Local brands. Product delivery is arranged according to customer needs at specified locations.

Toos Argh Yekta Trading Group



## Products

The supply of various types of steel sheets, including Hot Rolled Coil, Cold Rolled Coil, Colored Coil, Hot Rolled Pickled, Galvanized Roll, stainless steel, Checkered Plate, Rebar, Steel beam, Angle Iron Bar, and Box Bar at the lowest market rates is our specialty. We offer the possibility of deferred payment options and through LC



## Cutting Service

Toos Argh Yekta has the capability to deliver orders in cut and bundled form according to your required

## Mission

Toos Argh Yekta is prepared to supply steel production items, including Electrical Panels, Rabitz Mesh, Gypsum boards, Angles Iron Bar, Box Bars, Cable Trays, and LSF (Light Steel Framing) for export to neighboring countries, including CIS countries and Afghanistan



## Freight shipping services

Transporting steel and metal, requires sufficient information and proper planning to ensure that the cargo is delivered to the customer in the best possible condition and on time, with minimal damage. Toos Argh Yekta, by employing experienced and professional drivers, and considering parameters such as security and speed in transportation, strives to achieve the maximum satisfaction of our customers.

LSF a type of steel structure known as a light steel framework.

This structure refers to prefabricated systems in which thin-walled steel sections are used in their construction. These steel sections are made from low-thickness galvanized sheets. Galvanized sheets have high resistance to corrosion and rust.

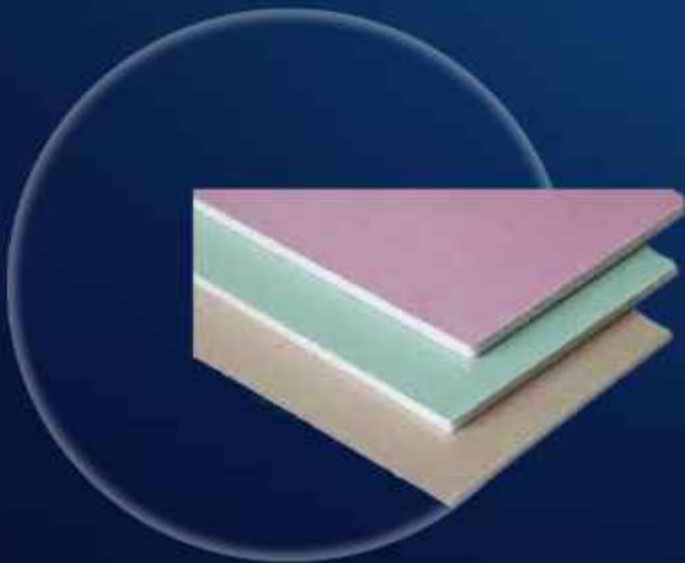
This structure forms the framework and main skeleton of the building. To reduce the weight of the structure and achieve lightweight construction, profiles produced by the cold-rolling method are used. Finally, to reinforce and install these types of profiles, materials such as stone or PVC should be utilized.



#### **Advantages of LSF (Light Steel Framework) structures:**

- High resistance and rigidity
- Strong resistance to disasters such as fire, earthquakes, and pests
- Lightweight and low weight
- Capability to install the structure in various weather conditions
- Very simple and easy installation with low installation costs
- **Uniformity of all surfaces**
- Recyclability of all used materials
- High speed in installation and execution
- Long lifespan and durability
- High flexibility
- Strong resistance to physical and chemical corrosion

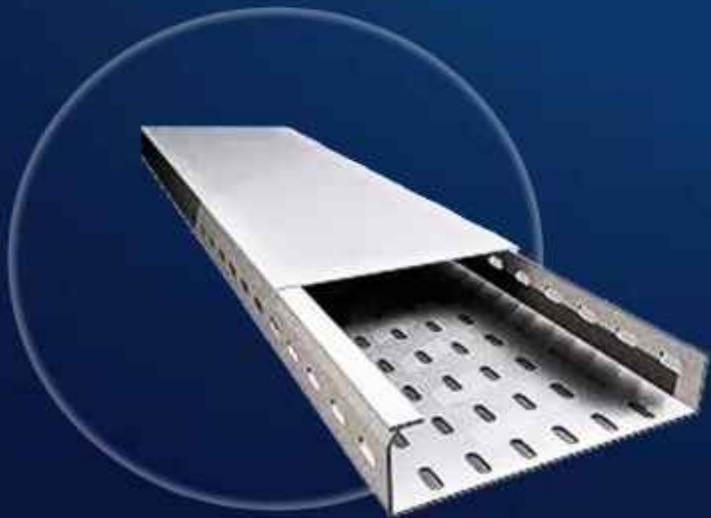
Gypsum board (commonly known as drywall) has a core made of gypsum, which is encased in a thin layer of galvanized sheet metal, paper, or a resistant cardboard. Due to its paintability, moldability, and ability to be cut into various sizes and dimensions, gypsum board is used as an aesthetic element in interior design. It is available in thicknesses of 6, 9.5, 12.5, 15, and 18 mm.



**Applications of Gypsum Board in Building:**

- 1. Framed Wall Covering
- 2. Unframed Wall Covering
- 3. Applications of Framed and Unframed Wall Coverings
- 4. Integral Ceiling

Cable trays (either PVC or galvanized metal) are used in electrical installations. These tools are utilized for the transmission, protection, aesthetics, and organization of extensive wiring, as well as for the installation of various fluorescent lights underneath them in buildings. Cables must run entirely through the cable tray, including vertical movements. Cable trays are primarily made from galvanized iron, but they can also be made from painted iron, stainless steel, or even plastic. The new type of these trays is PVC trays. PVC cable trays are particularly suitable for use in electrical installation systems due to their specific features.



#### **Cable tray dimensions:**

They are produced in standard sizes and sold in the market. Generally, this product is designed and manufactured in sizes of 100, 150, 200, 250, 300, 400, and 500.



The Electrical Panel is a cabinet for installing and wiring electrical or electronic equipment, where switches, control and protective components, and display devices (such as voltage, current, frequency, power, power factor, etc) are installed. These panels are also used to prevent electric shock to users of the equipment and to protect the devices from environmental factors. Inside these panels, there are many components such as fuses, busbars, relays, timers, contactors, circuit breakers, switches, transformers, wires, and cables, among others. Each of these components has its own specific functions. The presence of these electrical panels is essential for the safe transmission and distribution of electrical energy.



### **Types of Electrical Panels:**

- **Medium Voltage Panel:** These panels have a voltage range between 1 and 36 kilovolts. They are usually assembled in a multi-cell format and are classified into three categories: traditional pressure panels, sliding medium voltage panels, and compact medium voltage panels.

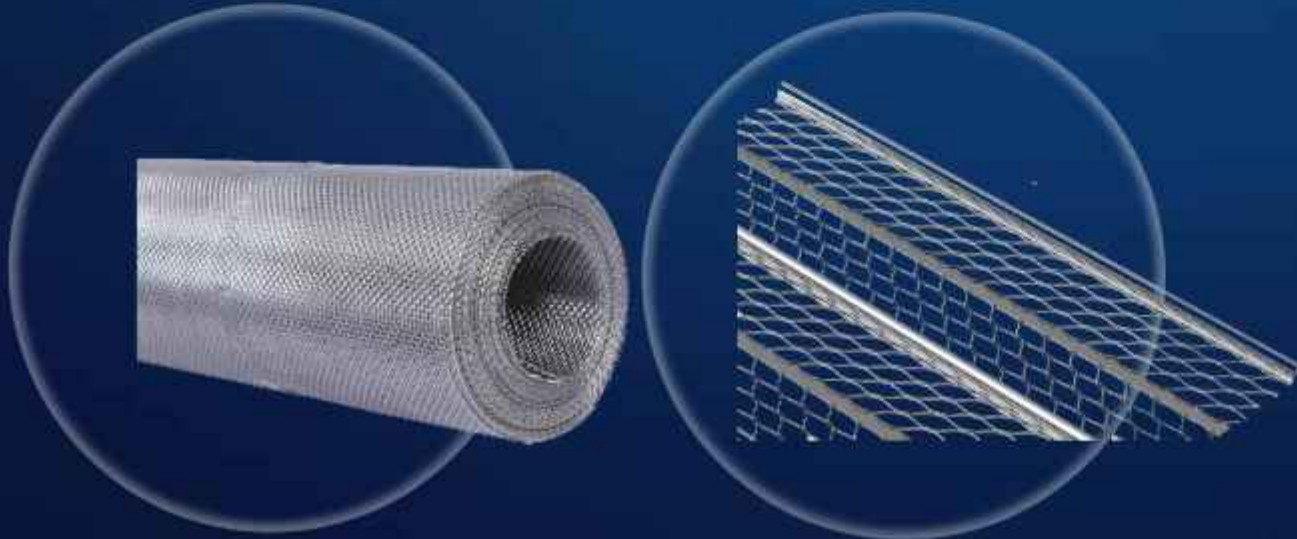
- **Low Voltage Panel:** This is the most common type of electrical panel found in residential buildings.



Rabitz (which is also referred to as expanded steel sheet) is one of the types of steel sheets used in construction projects, beautification, and decoration. These sheets have a mesh-like appearance and are produced using very precise and sensitive machinery. The base sheet used for producing expanded steel sheets is galvanized sheet metal. Rabitz is divided into three categories: light, medium, and heavy.

#### **Stages of Rabitz installation:**

- Install hanging rebar
- Install Rabitz mesh
- Plastering



#### **Types of Rabitz Work:**

1. Facade Rabit: This is used for creating building facades with self-supporting and durable structures.
2. Ceiling Rabitz: This type of rabit work is used to construct lightweight ceilings that are resistant to various pressures.
3. Column Surrounding Rabitz: This serves as an effective reinforcement method for protecting the areas around columns in buildings



## Customer Satisfaction

Toos Argh Yekta, with a skilled team relying on experience, employee commitment, and technical knowledge, strives to achieve greater customer satisfaction.

Esteemed customers can send their suggestions and feedback via email to the address below, and they will receive a response as soon as possible after the relevant department follows up on their inquiries.





## Contact Us



HQ: No. 10, South Khayam 26 St,  
Khayam Blvd., Mashhad, IRAN

Tehran Branch : Sayeh Tower, Jordan St



[WWW.Toosarg.ir](http://WWW.Toosarg.ir)

[WWW.Toosarg.com](http://WWW.Toosarg.com)

051 - 37 660 660



[Toosargyekta@gmail.com](mailto:Toosargyekta@gmail.com)

051 - 37 67 9000



[@Toosarg](https://t.me/Toosarg)

021 - 72 41 81 00